

## Single Leaf EI<sub>230</sub> / T30 Fire-Retardant Steel Gate

<b>Fire Protection</b>	<b>EI<sub>230</sub> / T30</b>	<b>tested acc. to EN 1634-1</b>
<b>Smoke Control (optional)</b>	<b>S<sub>a</sub>, S<sub>200</sub> / RS</b>	<b>tested acc. to EN 1634-3</b>
<b>Self-Closing (optional)</b>	<b>up to C5</b>	<b>tested acc. to EN 1191</b>

**Certified in accordance with DIN EN 16034 / 14351-1 / 13241**

### Optional Audited Additional Functions

- Sound Insulation	<b>up to 54 dB</b>	tested acc. to EN ISO 10140-2
- Burglar Protection	<b>RC2/RC3/RC4/RC5</b>	tested acc. to EN 1627
- Bullet Resistance	<b>FB4-NS</b>	tested acc. to EN 1522
- Air Tight	<b>up to class 4</b>	tested acc. to EN 1026
- Rain- and Fire-Water Tight	<b>class 6A</b>	tested acc. to EN 1027
- Wind load Resistance	<b>class 4</b>	tested acc. to EN 1221
- Blast Resistance	<b>up to 8 kPa</b>	tested acc. to EN 13124-1
- Explosion Protection	<b>up to zone 1/21</b>	acc. to EN 1127-1 or ATEX 2014/34/EU
- Stainless Steel		

### Range of Dimension

**Width** from 1500 mm to 2500 mm  
**Height** from 3000 mm to 5000 mm

### Technical Specification and Tender Text

<b>Product:</b>	<b>EI<sub>230</sub> / T30 single leaf fire retardant steel gate brand Buchele tested acc. to EN 1634-1</b>
<b>Door Type:</b>	<b>PLANE Line PL 301 XXL BASIC</b>
<b>Structural Opening:</b>	<b>.... x .... mm</b>
<b>Door Leaf:</b>	Double-walled, planar 84 mm thick steel door leaf without hinge embossing, three sides rebated with thick rebate. Without bottom stop. Special insulating inserts fully laid-in and glued. Securing pin screwed in door leaf rebate.
<b>Threshold:</b>	Floor bracket as separation sill. Surface galvanized and welded to the frame.
<b>Frame:</b>	3-sided circumferential rebated corner frame with visible black coated intumescent material in rebate. High-quality multi chamber sealing profile adjustable fixed in the three-sided groove.
<b>Hinges:</b>	Three-part, height adjustable construction hinges with hinge pin retention and ball bearing spacer ring for smooth door movement.
<b>Door Closer:</b>	Door closer system with standard arm acc. to EN 1154 silver coloured mounted on hinge side.

<b>Fitting:</b>	Mortise lock with latch lever function acc. to EN 12209 (prepared for installation of a profile cylinder lock, provided by customer). Door handle set in acc. to EN 1906 fixed pivoted synthetic material black in U-shape with rounded short-plate.
<b>Surface:</b>	Door leaf and frame galvanized und primed with 2K-PUR primer (Very High Solid) similar RAL 7035.
<b>Installation:</b>	masonry $\geq 115$ mm concrete $\geq 100$ mm areated concrete $\geq 200$ mm mounting wall F60 $\geq 125$ mm

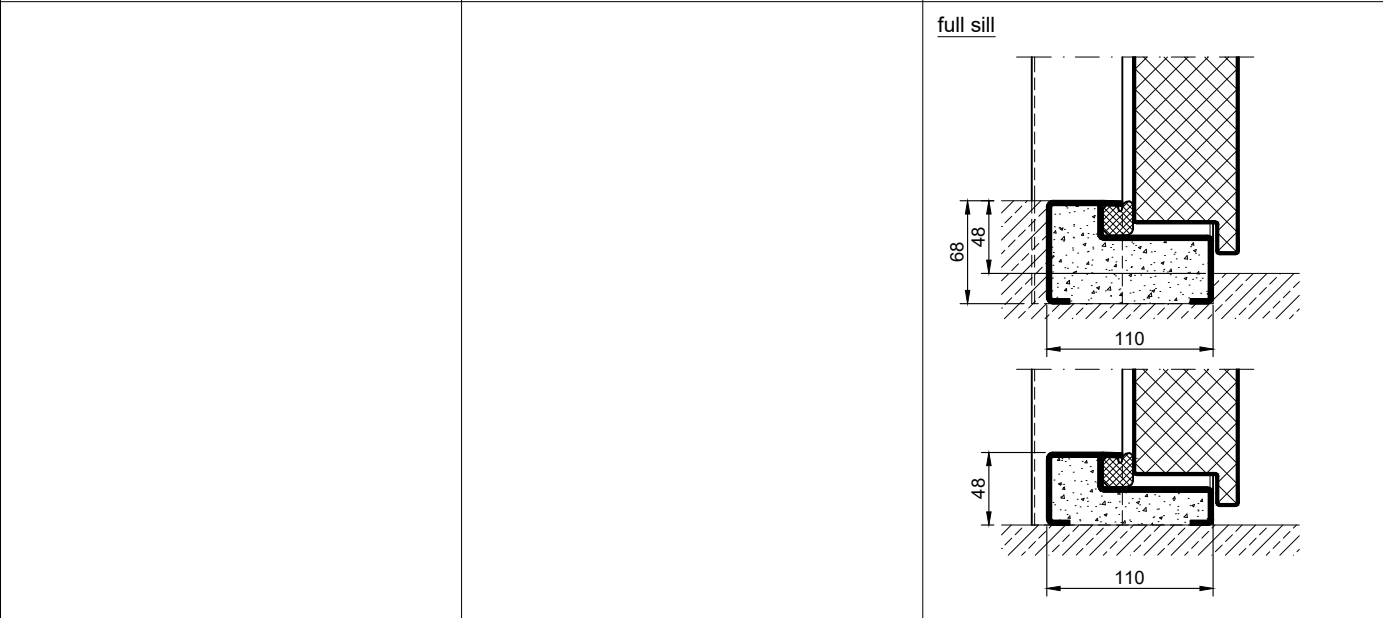
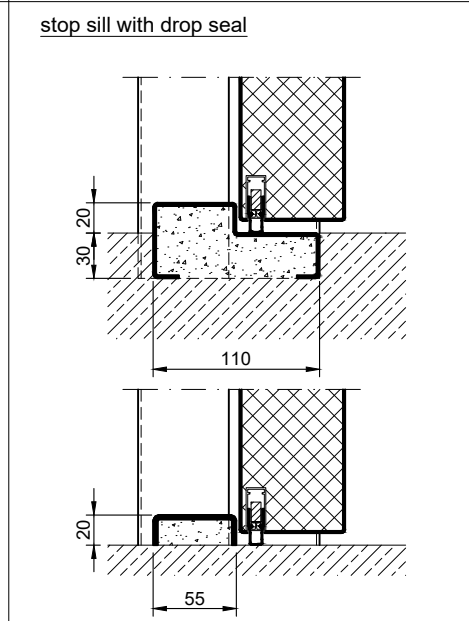
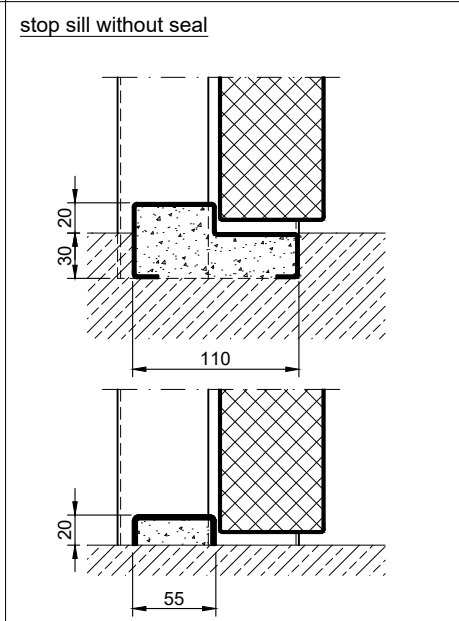
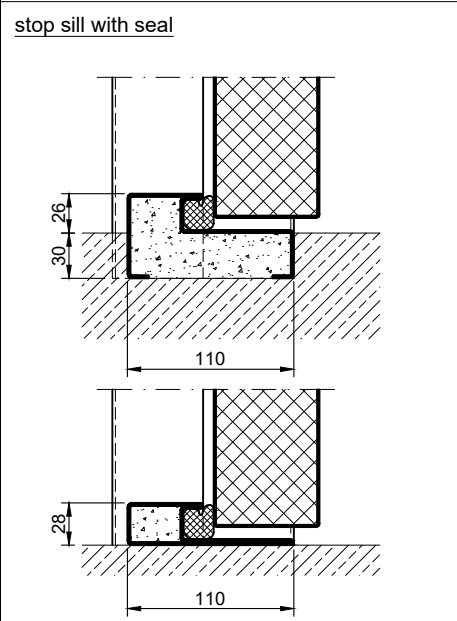
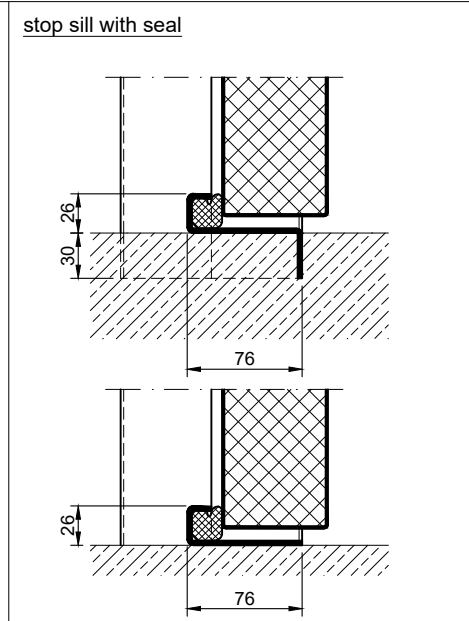
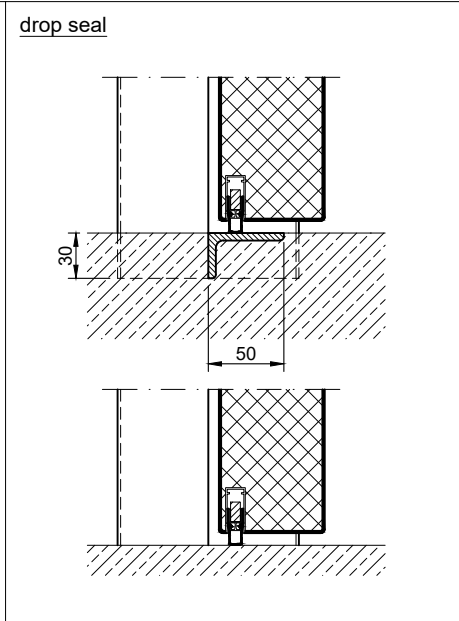
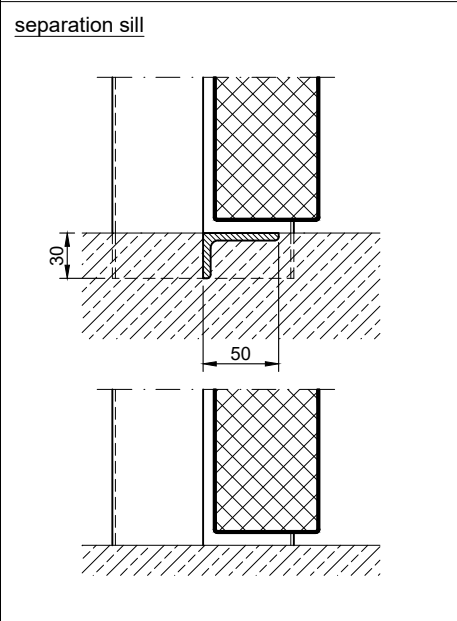
### Alternative: PLANE Line PL 301 PREMIUM with flush mounted optics

<b>Frame:</b>	3-sided circumferential rebated PLANE Line special corner frame for flush mounted optics on hinge side. With visible, black coated intumescent material in rebate. High-quality multi-chamber sealing profile adjustable fixed in the three-sided groove.
<b>Hinges:</b>	Three-part, height adjustable construction hinges with hinge pin retention and ball bearing spacer ring for smooth door movement.

### Supplementary Equipment

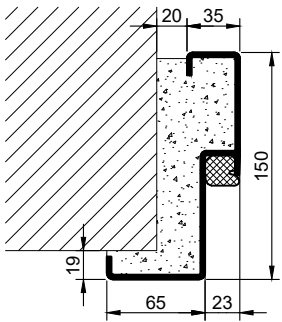
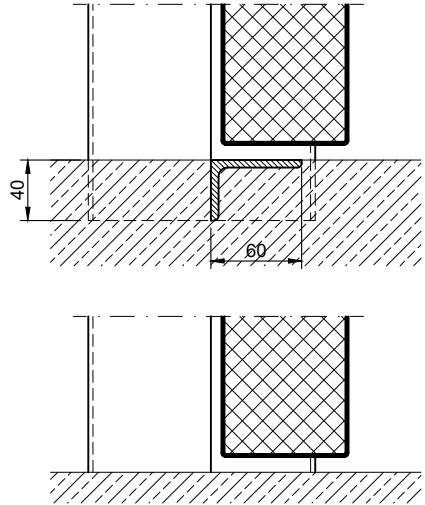
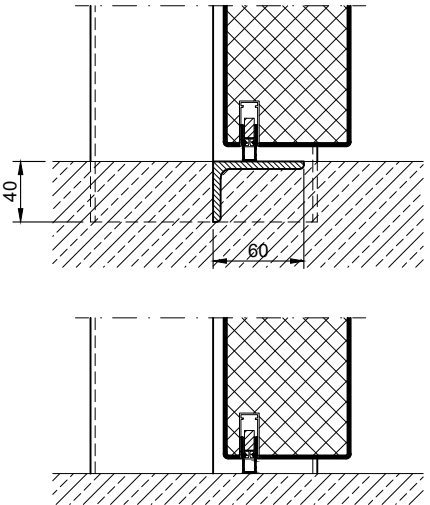
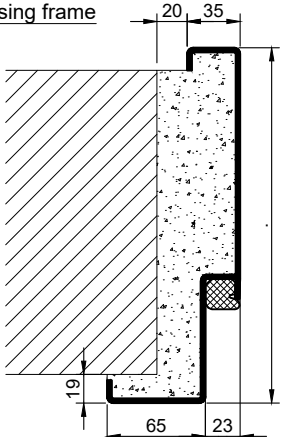
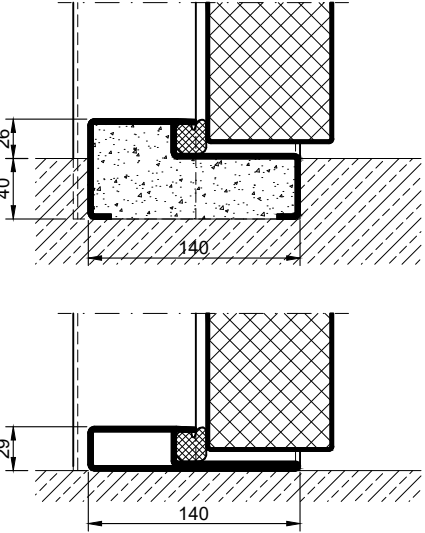
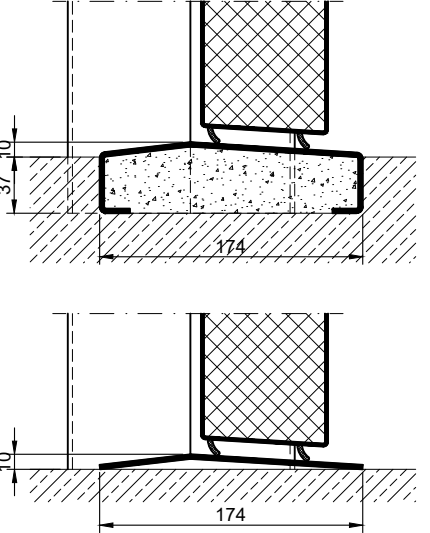
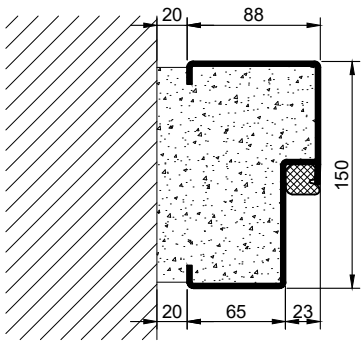
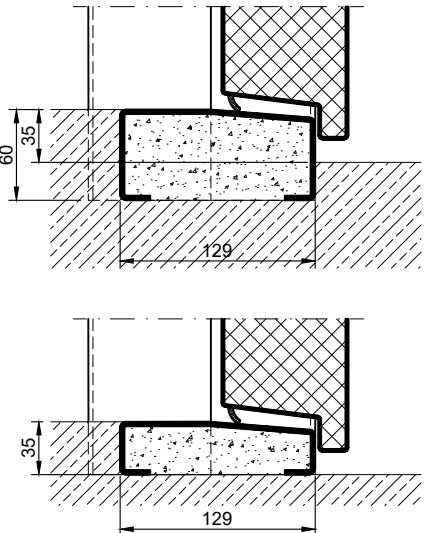
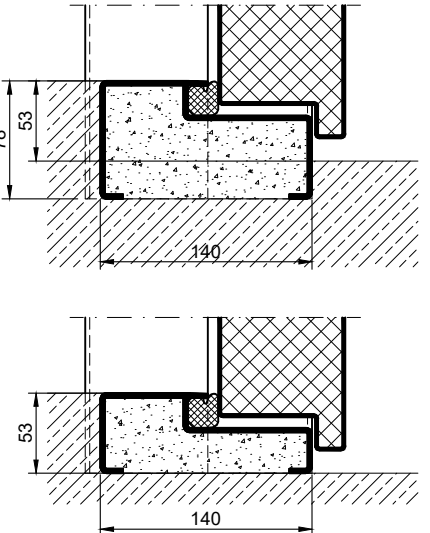
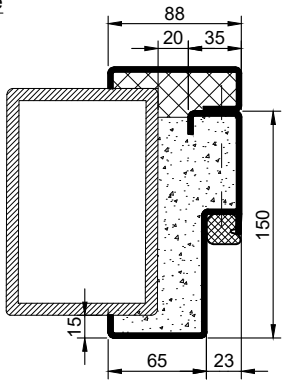
<b>Glazing:</b>	F30 fire-protective glazing fixed with profiled and visible screwed steel glazing bars. Minimum border 125 mm on side and top, base 300 mm.
<b>Stainless Steel:</b>	Material 1.4301 (V2A) or 1.4404 (V4A), Surface mill finish or brushed.
<b>BUCHELE DELUXE:</b>	The exclusive surface coating.

### Thresholds



1.0.1\_PLANE LINE PL 301\_EN

technical modifications reserved - edition 03/2024

Frames	Thresholds	
<p>corner frame</p> 	<p>separation sill</p> 	<p>drop seal</p> 
<p>encasing frame</p> 	<p>stop sill with seal</p> 	<p>hump sill</p> 
<p>block frame</p> 	<p>half sill</p> 	<p>full sill</p> 
<p>corner frame with counter frame</p> 		

1.0.2. PLANE LINE PL 301 XXL\_EN

technical modifications reserved - edition 03/2024